



TRANSITION

SUBMITTAL HUSKY SD 4200 SUPER DUTY TRANSITION – CAST IRON TO PLASTIC

Anaco • 675 Tyler Avenue • Marshfield, MO • 65706 • (800) 486-8188

Certifications & Standards

Tested & Certified to:

ASTM C1460

ASTM C564

CSA B 602

IAPMO File 5794

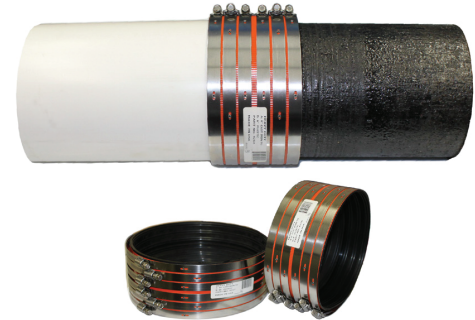
Material Specifications:

Clamp: Type 304 AISI stainless steel

Screw: Type 305 AISI or 304L stainless steel 3/8"

Shield: Type 304 AISI stainless steel, corrugated. Shield thickness 0.015

Gasket: The gasket shall be manufactured from a properly vulcanized virgin compound in which the primary elastomer is polychloroprene (neoprene) conforming to ASTM C 564. Oil Immersion test: 80% max. Volume Change after immersion in IRM 903 for 70 hours at 212° F.



Size	Width	No. of Straps	Torque
2", 3" & 4"	3.0	4	80
6", 8" & 10"	4.0	6	80

The HUSKY SD 4200 Cast Iron to Plastic Coupling has been engineered by Anaco to provide a super-duty, all stainless steel coupling, balancing the desire for a more rigid joint with the need to provide a superior positive seal, which can accommodate possible disparities in the No-Hub pipe and fittings. This has been accomplished by manufacturing our coupling with a super-duty corrugated shield of sufficient width to accommodate additional surface-bearing sealing clamps.

The additional sealing clamps when torqued to 80-inch pounds, offer two salient performance related features. First, the overall dimensional thickness of the clamp and shield, in conjunction with the additional width of the coupling, result in a more uniformly rigid joint, with the load being supported at both the outer edge of the coupling and the centerline of the joint. Second, the additional sealing clamps yield increased surface-bearing contact between the coupling and the pipe or fittings, thereby inhibiting joint movement at higher internal pressures not commonly associated with a DWV system.

The 2" through 4" diameter couplings consist of a 3" wide corrugated 304 stainless steel shield in conjunction with four (4) stainless steel clamps, secured in place by means of an affixed and "floating" eyelet to allow the clamp "travel" during tightening.

The 6" through 10" diameter couplings consist of a 4" wide corrugated 304 stainless steel shield in conjunction with six (6) stainless steel clamps, secured in place by means of an affixed and "floating" eyelet to allow the clamp "travel" during tightening.

All HUSKY SD 4200 Couplings are designed to be installed with a pre-set torque wrench calibrated at 80-inch pounds to accommodate the 3/8" Hex Head screw.