

## TRANSITION

### Certifications & Standards:

Tested & Certified to ASTM C 1460  
 Tested & Certified to C 564  
 Tested & Certified to CSA B 602  
 IAPMO FILE 5794

*100% Made in USA*

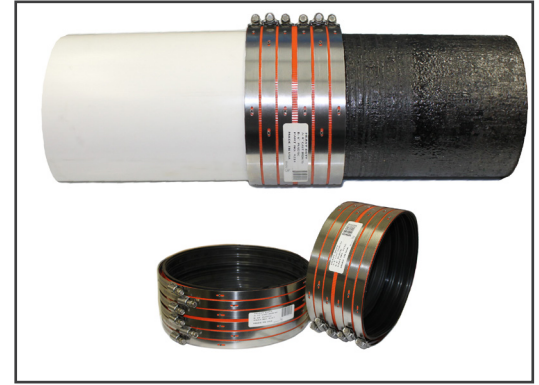
### Material Specifications:

**Clamp:** Type 304 AISI stainless steel

**Screw:** Type 305 AISI stainless steel 3/8"

**Shield:** Type 304 AISI stainless steel, corrugated.  
 Shield thickness 0.015"

**Gasket:** The gasket shall be fabricated from a properly vulcanized virgin compound in which the primary elastomer is polychloroprene (neoprene) conforming to ASTM C564. Oil Immersion test 80% max. Volume Change after immersion in IRM 903 for hours at 212° F.



Size	Width	No. of Straps	Torque
2", 3" & 4"	3.0	4	80
6", 8" & 10"	4.0	6	80

The Husky SD 4000 Cast Iron to Plastic Coupling has been engineered by Anaco to provide a heavy-duty, all stainless steel coupling, balancing the desire for a more rigid joint with the need to provide a superior positive seal, which can accommodate possible disparities in the No-Hub pipe and fittings. This has been accomplished by manufacturing our coupling with a super-duty corrugated shield of sufficient width to accommodate additional surface-bearing sealing clamps.

The additional sealing clamps when torqued to 80-inch pounds, offer two salient performance related features. First, the overall dimensional thickness of the clamp and shield, in conjunction with the additional width of the coupling, result in a more uniformly rigid joint, with the load being supported at both the outer edge of the coupling and the centerline of the joint. Second, the additional sealing clamps yield increased surface-bearing contact between the coupling and the pipe or fittings, thereby inhibiting joint movement at higher internal pressure not commonly associated with a DWV system.

The 2" through 4" diameter couplings consist of a 3" wide corrugated 304 stainless steel shield in conjunction with four (4) stainless steel clamps, secured in place by means of an affixed and "floating" eyelet to allow the clamp "travel" during tightening.

The 6" through 10" diameter couplings consist of a 4" wide corrugated 304 stainless steel shield in conjunction with six (6) stainless steel clamps, secured in place by means of an affixed and "floating" eyelet to allow the clamp "travel" during tightening.

All SD 4000 couplings are designed to be installed with a pre-set torque wrench calibrated at 80-inch pounds to accommodate the 305 stainless steel 3/8" Hex Head screw.